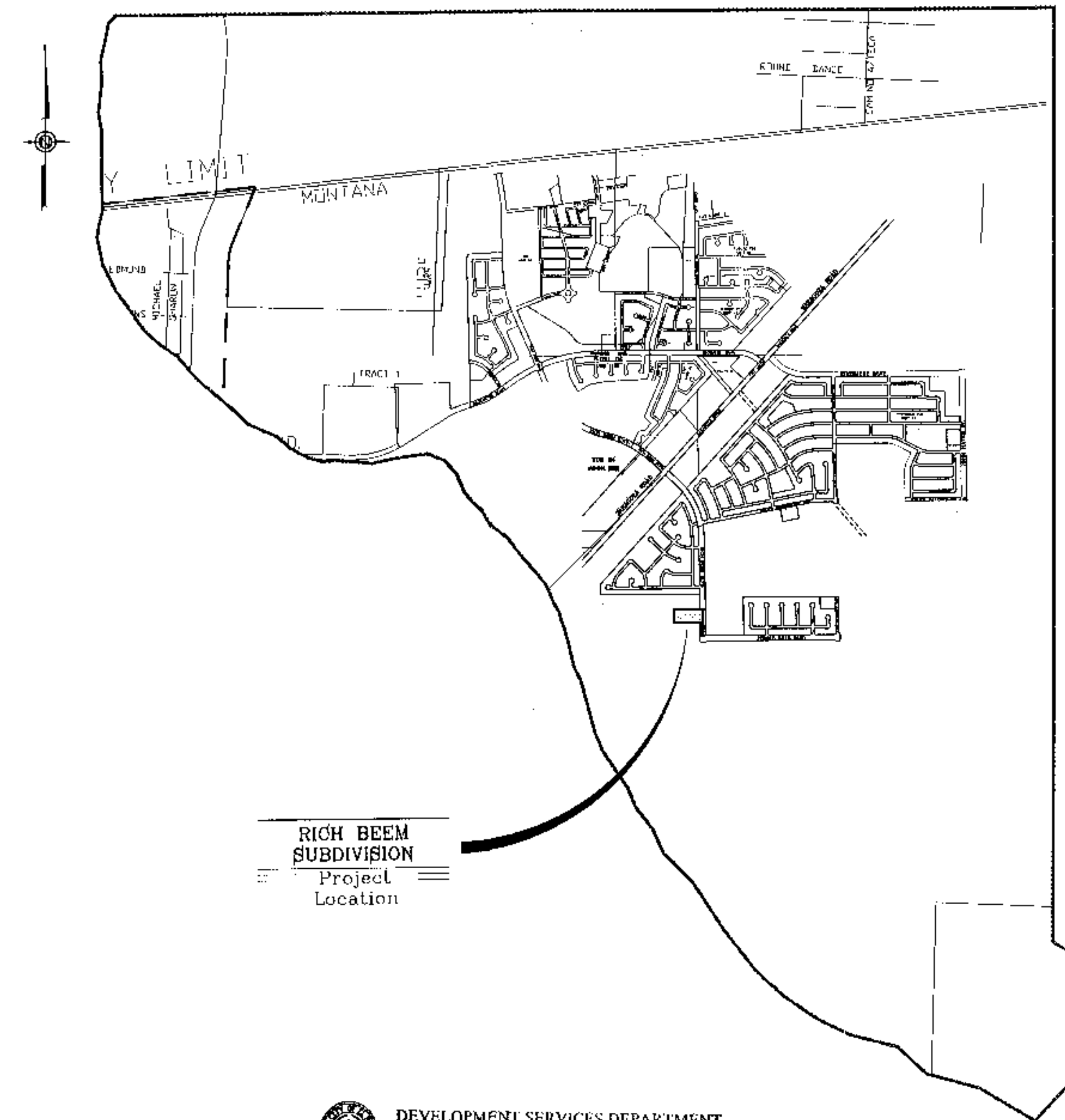


VICINITY MAP



DEVELOPMENT SERVICES DEPARTMENT

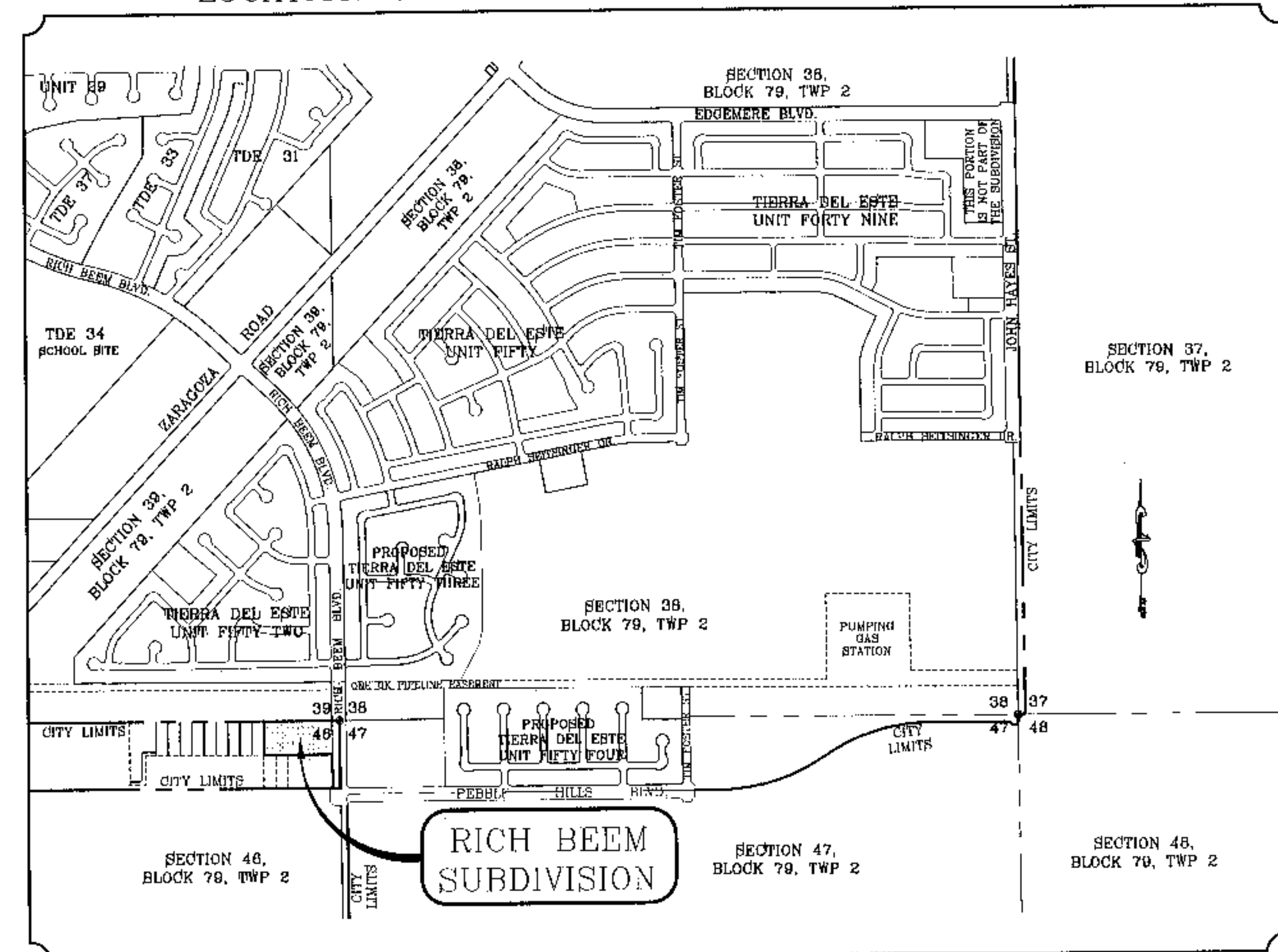
SITE PLAN REVIEW
Reviewed For Compliance For Conditions Related To:

- Demolition Only
- Grading & Drainage
- On Site Parking Layout
- Site Work
- Drainage
- Signs
- Storm Water

Checked by Miss Callie Harris for 100% compliance for
 BY *Miss Callie Harris* DATE 5/1/08

LOCATION MAP

SCALE: 1" = 1000'



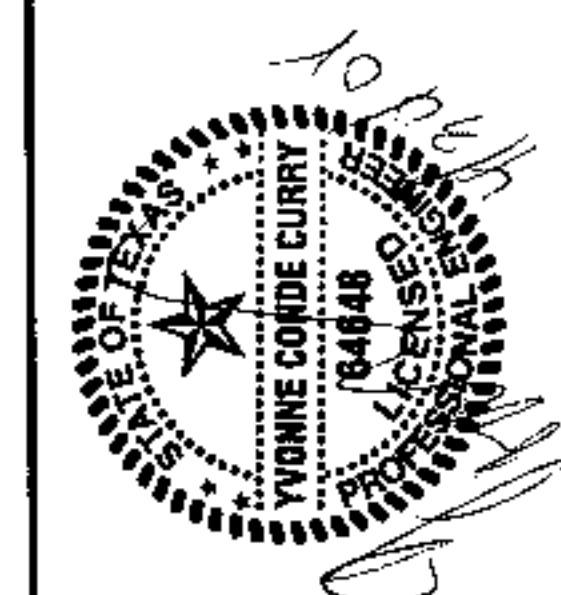
STREET IMPROVEMENTS

I N D E X

TITLE	SHEET No.
COVER SHEET	1 OF 12
PLAT	2-2A OF 12
GRADING	3 OF 12
DRAINAGE	4 OF 12
S.W.P.P.P AND STANDARD DETAILS	5-6 OF 12
RICH BEEM BLVD.	7 OF 12
POND SECTIONS	8 OF 12
DRAINAGE STRUCTURES	9-10 OF 12
STRUCTURE DETAILS	11 OF 12
STANDARD DETAILS	12 OF 12
LANDSCAPE & IRRIGATION PLAN	1 OF 1

PROJECT NAME
RICH BEEM SUBDIVISION

BEING A PORTION OF SECTION 46, BLOCK 79, TOWNSHIP 2,
 TEXAS AND PACIFIC RAILROAD COMPANY SURVEY,
 EL PASO COUNTY, TEXAS,
 CONTAINING 3.9413 ACRES



CONDE INC.
 ENGINEERING / PLANNING
 SURVEYING / GPS
 1790 LEE FRESHWATER DR. STE 400
 EL PASO, TEXAS 79902

