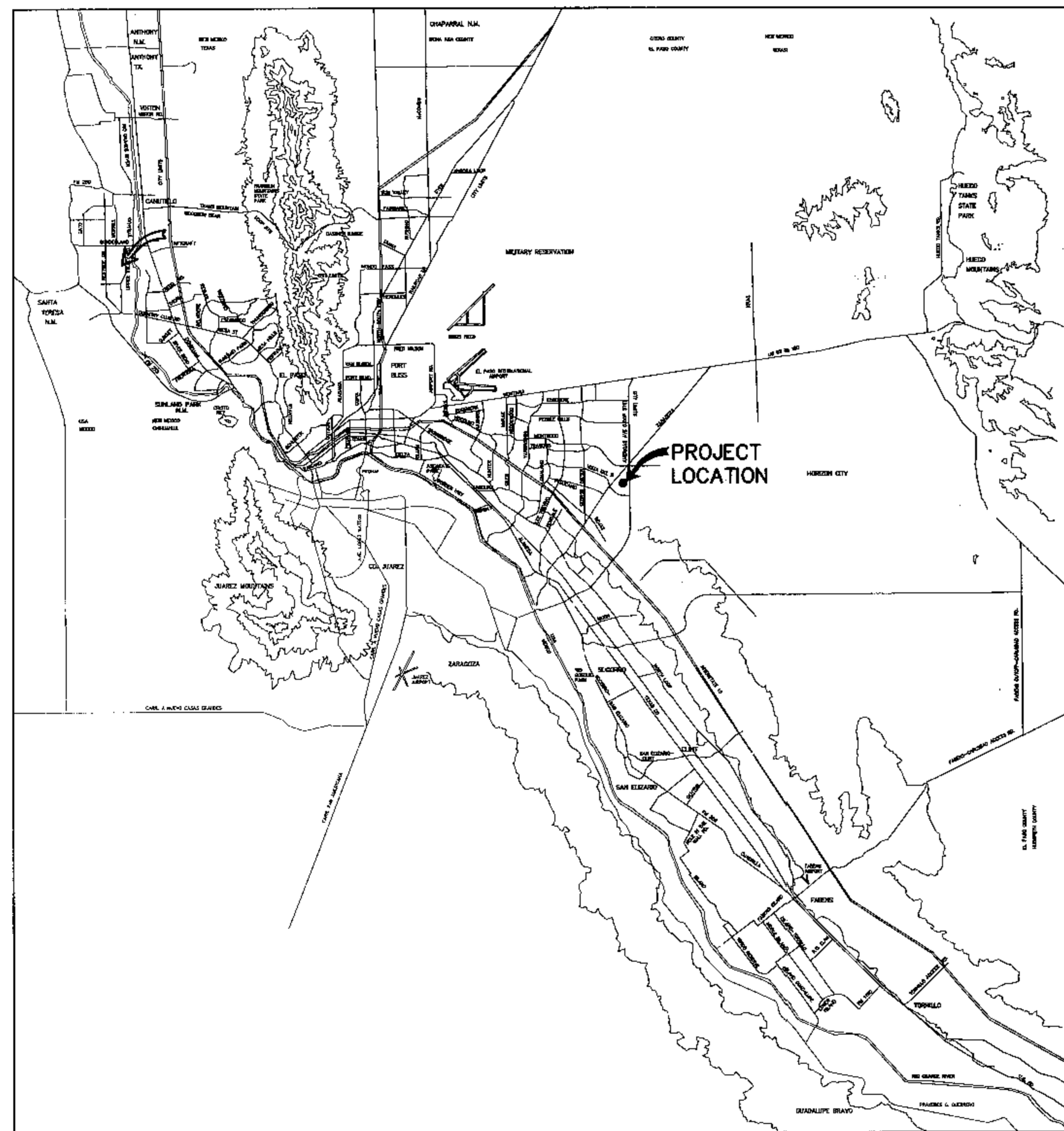


HILLPOINT ESTATES UNIT FIVE

SUBDIVISION IMPROVEMENTS

BEING TRACT 17-C-164, SECTION 8, BLOCK 79, TOWNSHIP 3, TEXAS
AND PACIFIC RAILROAD SURVEY, AN ADDITION TO THE CITY OF EL PASO,
EL PASO COUNTY, TEXAS; CONTAINING 1.502± ACRES



VICINITY MAP
APPROXIMATE SCALE:
1" = 2 MILES

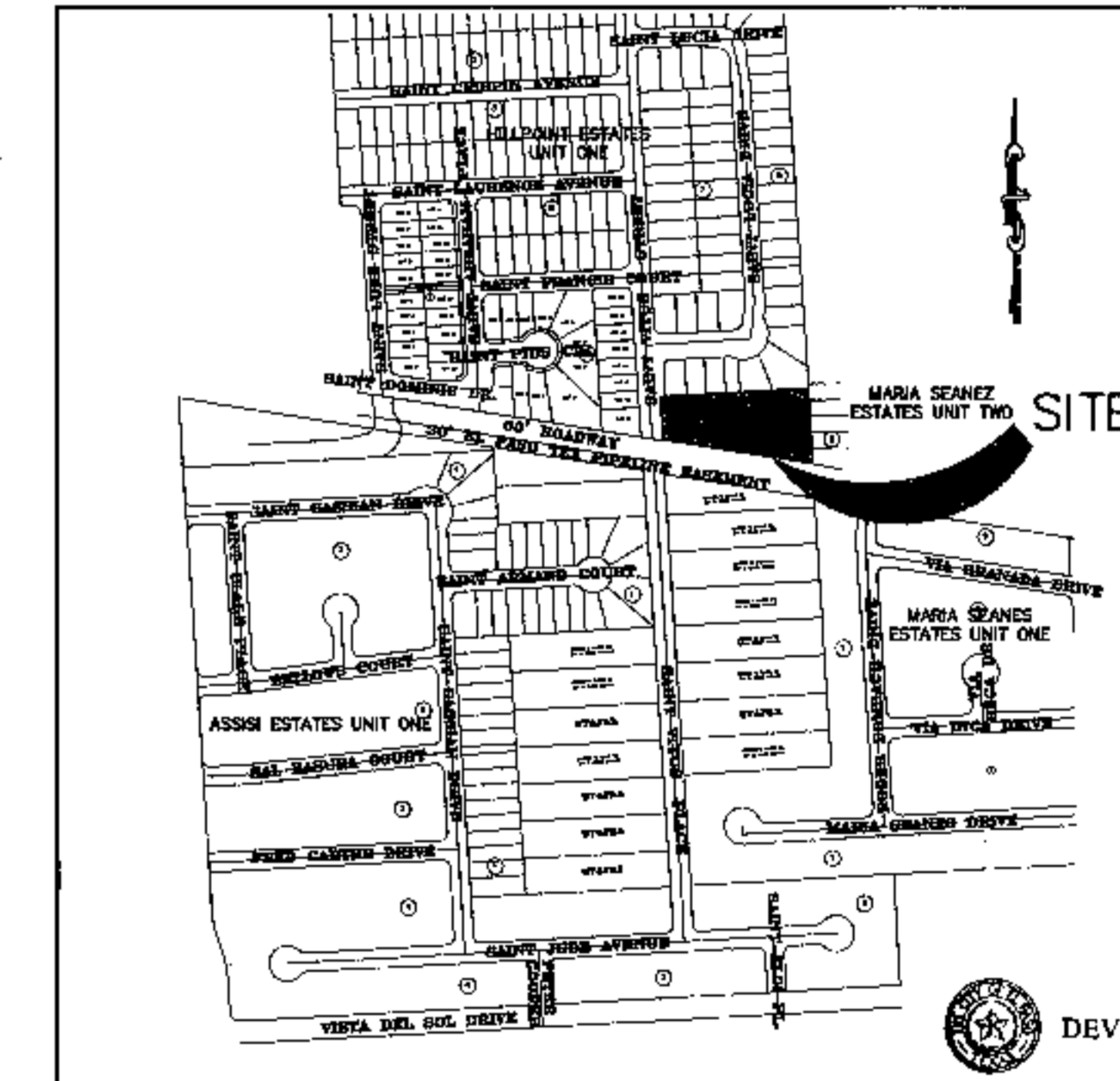
SHEET NUMBER	SHEET TITLE
CVR, 1	COVER SHEET, GENERAL INFORMATION
2	FINAL PLAT
3, 5	GRADING PLAN AND GRADING SECTIONS
4	DRAINAGE PLAN
6	STREET PLAN & PROFILES
7-8	STANDARD DETAILS
9	ILLUMINATION PLAN
10-12	SWPPP



Jorge L. Azcarate
JORGE L. AZCARATE, P.E. PROJECT MANAGER

cea
engineering group
1204 Montana Ave., El Paso, Texas 79902
Office 915.544.5232 Fax 915.544.5233
www.ceagroup.net

LOCATION MAP SCALE: 1"=600'



DEVELOPMENT SERVICES DEPARTMENT
THE CITY IS NOT PRECLUDED FROM IMPOSING REQUIREMENTS THAT MAY ARISE UPON FURTHER REVIEW OF THE PLANS

DEVELOPMENT SERVICES DEPARTMENT
Reviewing by the City of El Paso shall neither constitute approval nor have responsibility of the adequacy of design and plans.

LOCATION MAP
APPROXIMATE SCALE:
1" = 600'

DEVELOPMENT SERVICES DEPARTMENT
SITE PLAN REVIEW
Reviewed For Conformance For Conditions Related To:

- Demolition Only
- Grading & Drainage
- Wheelchair Ramps
- On Site Parking Layout
- Sidewalks
- Driveways
- Retaining Rock Walls
- On-Site Ponding of Storm Waters

Contractor Must Call 24 Hours Prior To Construction For Inspection
Jorge L. Azcarate 03/27/07
BY DATE

PRINCIPAL CONTACTS:

	NAME	ADDRESS	CITY & ZIP	PHONE	FAX
OWNER:	ELIA THOMPSON	10138 STONEWAY DR	EL PASO, 79925	(915) 598-1544	(915) 821-3558
ENGINEER:	CEA ENGINEERING GROUP	1204 MONTANA AVE.	EL PASO, 79902	(915) 544-5232	(915) 544-5233
SURVEYOR:	CAD CONSULTING COMPANY	1450 PENDALE ROAD SUITE B	EL PASO, 79936	(915) 591-5709	(915) 591-5706

HILLPOINT ESTATES UNIT FIVE

COVER SHEET				
DATE PREPARED	DRAWN BY:	DESIGN BY:	CHECKED BY:	APPROVED BY:
JANUARY 2007	A.H.	A.H.	J.L.A.	J.L.A.
REVISION NUMBER	SHEET NAME OR NUMBER	DESCRIPTION OF REVISION	DATE OF REVISION	REVISION APPROVED BY: