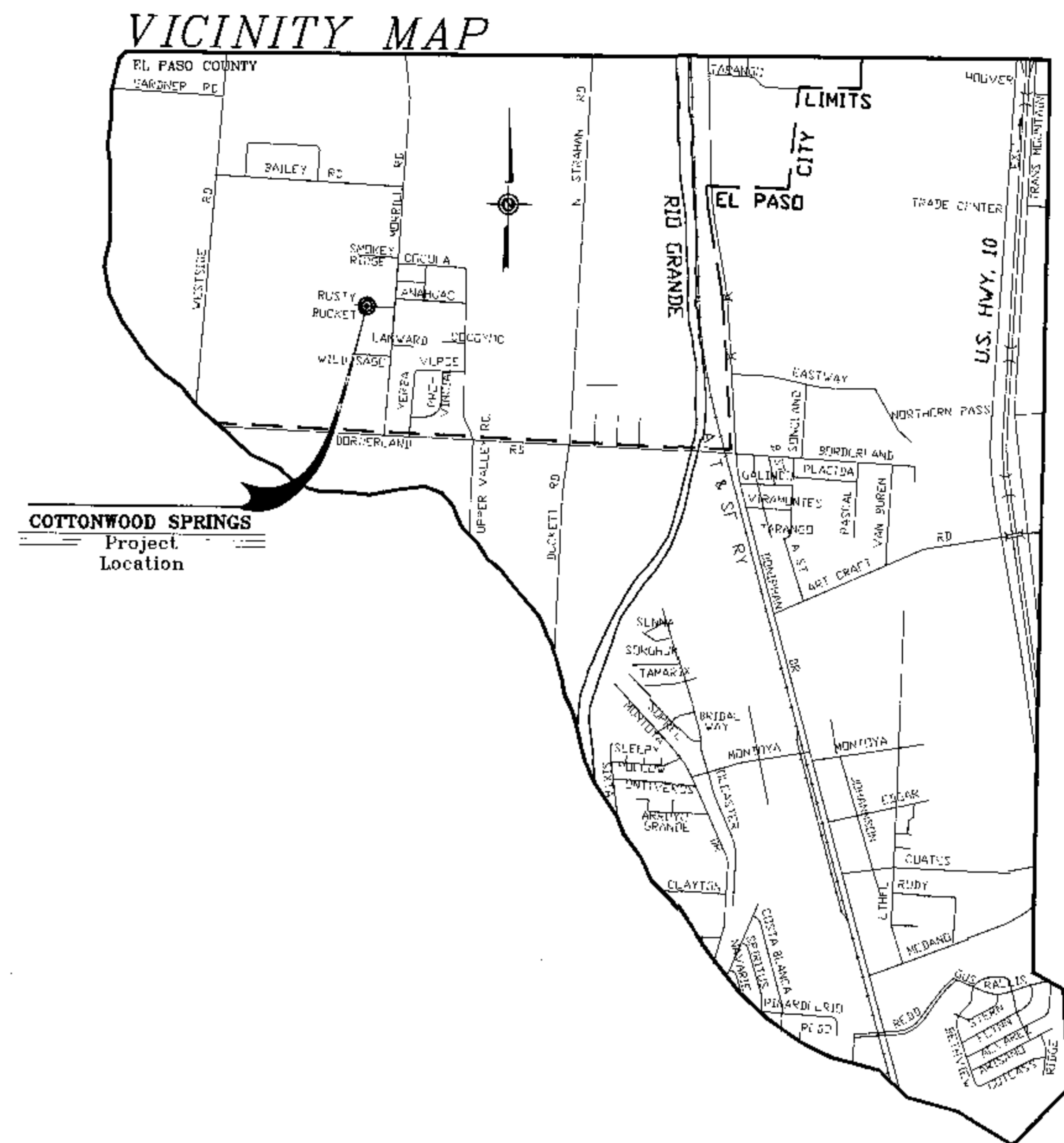
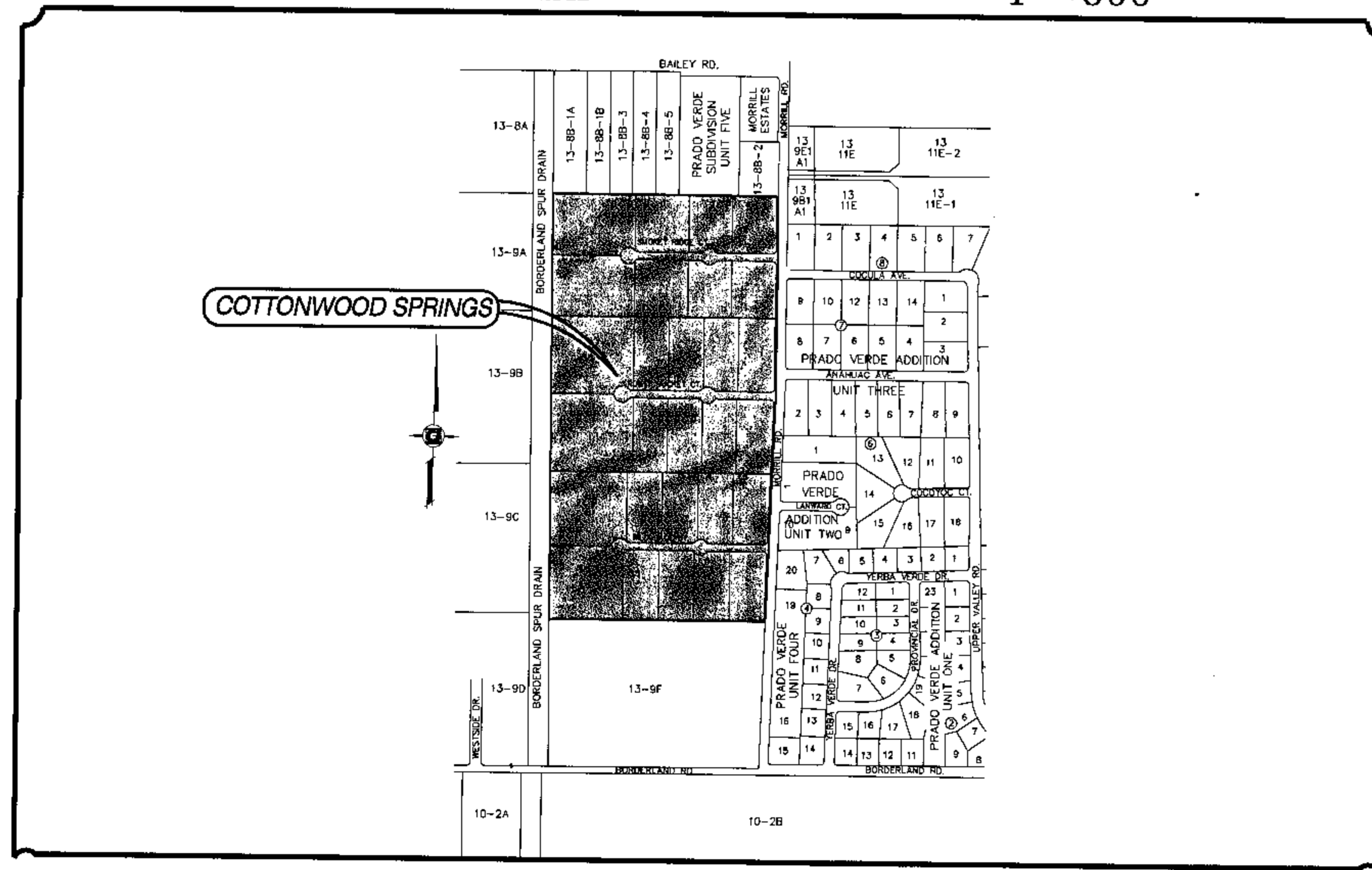


LOCATION MAP

1"=600'



INDEX

TITLE	SHEET No.
COVER SHEET	1 OF 19
PLAT	2,3,3A OF 19
GRADING PLAN	4 OF 19
DRAINAGE PLAN	5 OF 19
STORM WATER POLLUTION PREVENTION PLAN	6 OF 19
S.W.P.P. STD. DETAILS	7 OF 19
PLAN & PROFILES	8-16 OF 19
STANDARD DETAILS	17 OF 19
ILLUMINATION PLAN	18 OF 19
ILLUMINATION STD. DETAILS	19 OF 19
SEWAGE DISPOSAL PLAN	19A OF 19

ENGINEERING DEPARTMENT APPROVED

for conditions related to:

- Grading and drainage
- Sidewalks
- Driveways
- Wholesale ramps
- On-site parking of storm waters
- Retaining rock wall
- Concrete apron layout

This certificate shall be valid only if the City Engineering at 544-4220 is advised the final plans to construction for improvement. Plans must comply with City of El Paso and State Code requirements.

Date: 5/21/03

COTTONWOOD SPRINGS

PROJECT NAME

COTTONWOOD SPRINGS

BEING A PORTION OF TRACTS 9E, 9E1, 9E3, AND 9F,
BLOCK 13, UPPER VALLEY SURVEY,
CITY OF EL PASO, EL PASO COUNTY, TEXAS.

CONDE INC.
ENGINEERING / PLANNING
SURVEYING / GPS
1790 LEASERVING BLVD. SUITE 400
EL PASO, TEXAS 79906

